

LTP Series

LTP2000 SERIES PRINTERS

QQ:905052812

Mobile:+86 13798497616

Tel: +86 755 83759298 83759968

Fax:+86 755 22638877

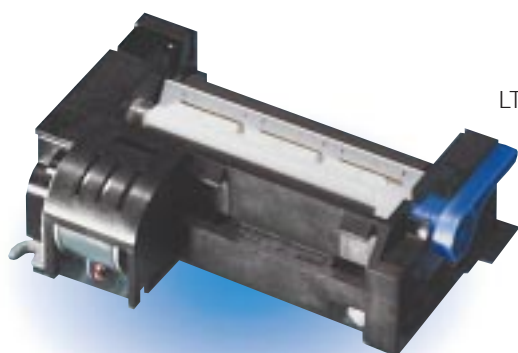
www.yjx.net.cn MSN: sz_lkj@hotmail.com

Email: yjx@yjx.net.cn 22009565@163.com

SII
Seiko Instruments

The LTP2000 Series answers the need for versatile, high-performance thermal printing in a compact unit. Available in models to handle paper widths of up to 112 mm, the LTP2000 Series combines high printing speeds with superb print quality and quiet operation. The rugged and reliable LTP2000 Series features more than four million character lines, and with optional interface, allows for automatic paper loading. The LTP2000 Series offers performance and value for a wide range of popular applications, including measuring instruments, medical equipment, bar code, label and receipt printing, kiosks and gas tank level sensing devices.

- High resolution printing (8 dots/mm)
- High speed printing (90mm/sec attainable with LTP2242)
- Compact and light-weight
- Prints on label stock
- Two possible paper paths, straight and curved; thick paper printing is possible on straight path
- Paper can be automatically loaded when used in conjunction with the paper sensor
- Wide opening head for easy access

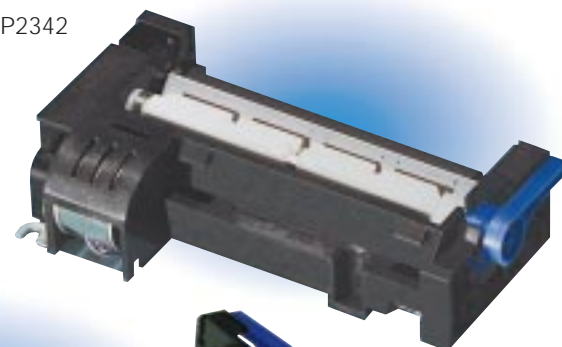


LTP2242



LTP2442

LTP2342



Model		LTP2242	LTP2342	LTP2442
Printing	Method	Thermal line dot system		
	No. of dots/line	432	576	832
	No. of characters/line	27	36	52
	Width (mm)	54	72	104
	Resolution	8 dots/mm		
	Paper feed pitch (mm)	0.125		
	Speed (mm/s)	90	75	
	Speed (cl/s)	18	15	
Detection	Head temperature	By thermistor		
	Paper out detection	By photo interrupter		
	Head up detection	By mechanical switch		
Dimensions (WxDxH) mm		85.2 x 61.4 x 27	106.4 x 61.4 x 27	138.2 x 61.4 x 27
Weight (g)	Approx.	120	140	160
Power supply	Operating voltage	24 VDC ± 2.4		
	Current consumption	1.6 A Max. @ 24 Vp (25% print ratio)	2.1 A Max. @ 24 Vp (25% print ratio)	3.1 A Max. @ 24 Vp (25% print ratio)
Service life	Pulse activation	100 million pulses or more (25% print ratio)		
	Abrasion resistance	50km or more		
Operating temperature (°C)		0 to 50		
Storage environment (°C)		-20 to 60		
Paper	Width (mm)	60 +0/-1	80 +0/-1	112 +0/-1
	Path	Straight or curve		
	Thickness (μm)	65 ± 5		

CUTTERS, INTERFACE BOARD & CPU

ACU2000 SERIES AUTO CUTTERS

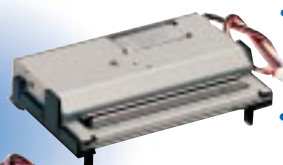
ACU2000 Series Auto Cutters are guillotine type cutters developed for the LTP2000 Series thermal line printer mechanism.

- Full or partial paper cut (one point remaining uncut) available by command input
- Easily mounts on printer mechanism, opens for easy maintenance

ACU2224A



ACU2424A



ACU2324A

IF2202-01B INTERFACE BOARD

The IF2202-01B is an interface board used specifically for the LTP2000 Series. It is equipped with 8-bit parallel and serial TTL data input terminals. It brings printing functions into full play using a wide variety of characters and function commands.

PT222P01 CPU

- Prints with less current using dynamic division control (via number of dots to be activated)
- Supports both parallel and serial input
- Ensures high-quality print by measuring the temperature and voltage, automatically adjusting print density
- Provides a wide variety of downloadable user-defined character functions including double-width/double-height, inverse print, underlining, and character spacing control
- Supports bit image and character printing, auto paper loading
- Ruler line function enables ruler line and character integration

Model		ACU2224A	ACU2324A	ACU2424A
Cut method		Guillotine type		
Cut width (mm)		63	85	116
Cut condition		Full or partial cut (leaving one point, 2 mm wide)		
Drive voltage (Vcc)	Motor	24 ± 2.4		
	Detector	5 ± 0.25		
Starting current (A)		1.2 max.		
Operating time (ms/cycle)		500 max.		
Cut frequency (cuts/minute)		30 max.		
Life (cuts)		300,000		
Dimensions (WxDxH) mm		79 x 66.5 x 16.5	100 x 66.5 x 17	126 x 69.3 x 17.5
Weight (g)		120	200	260
Operating temperature (°C)		0 to 50		
Storage temperature (°C)		-20 to 60		
Paper thickness (μm)		65		

Model	IF2202-01B
Applicable mechanism	All LPT2000 Series
CPU	PT222P01
Input control method	8-bit parallel (modified Centronics)
	Serial (TTL level)
Character type	IBM compatible, extended graphics character set
	Downloaded, user-defined characters
Dimensions (WxDxH) mm	90 x 100 x 22
Weight (g)	70
Operating voltage	Vcc=5 ± 0.5 V, Vp=24 ± 2.4V
Current consumption (Icc)	Max. 50 mA @ 5 VDC (standby)
	Max. 170 mA @ 5 VDC (printing)
Operating temperature (°C)	0 to 50
Storage temperature (°C)	-20 to 60

Model	PT222P01
Applicable mechanism	All LTP2000 Series
Package form	80-pin flat package
Dimensions (WxDxH) mm	22.8 x 16.8 x 3.05
Configuration	C-MOS LSI
Input method	8-bit parallel (Centronics), Asynchronous serial
Operating voltage (Vcc)	5 VDC ± 10%
Operating frequency (MHz)	25 ± 0.5%
Remark	Use this CPU and a gate array (PT301GA1) as a pair